



COMPASS

Queens Luxury Report

August 04 - 10, 2025, Residential Contracts \$1.25M+

Photo: [12-16 30th Ave, Unit 201](#)

The Queens luxury real estate market, defined as all properties priced \$1.25M and above, saw 11 contracts signed this week, made up of 4 condos, and 7 houses. The previous week saw 25 deals. For more information or data, please reach out to a Compass agent.

\$1,572,195

Average Asking Price

\$1,399,000

Median Asking Price

\$1,013

Average PPSF

2%

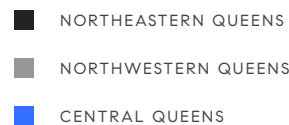
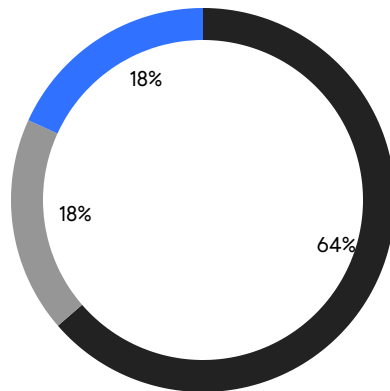
Average Discount

\$17,294,138

Total Volume

99

Average Days On Market



4

Condo Deal(s)

0

Co-op Deal(s)

7

Single-Family Deal(s)

\$1,508,063

Average Asking Price

\$0

Average Asking Price

\$1,608,842

Average Asking Price

\$1,465,625

Median Asking Price

\$0

Median Asking Price

\$1,398,888

Median Asking Price

\$1,382

Average PPSF

\$718

Average PPSF

1,106

Average SqFt

2,433

Average SqFt



49-53 Fresh Meadow Lane

Flushing

Contract Signed

Type	House	Price	\$2,300,000	Sq. Ft.	3,905	Beds	5
DOM	15	Initial	\$2,300,000	PPSF	\$589	Baths	4

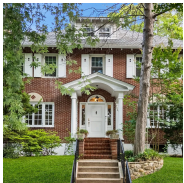


33-45 160th Street

Flushing

Contract Signed

Type	House	Price	\$1,780,000	Sq. Ft.	2,800	Beds	5
DOM	35	Initial	\$1,780,000	PPSF	\$636	Baths	3



35-41 164th Street

Flushing

Contract Signed

Type	House	Price	\$1,750,000	Sq. Ft.	-	Beds	6
DOM	3	Initial	\$1,750,000	PPSF	-	Baths	2

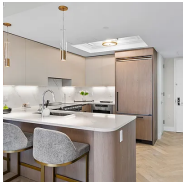


10-55 47th Avenue, Unit 7F

Long Island City

Contract Signed

Type	Condo	Price	\$1,715,000	Sq. Ft.	1,320	Beds	3
DOM	67	Initial	\$1,815,000	PPSF	\$1,300	Baths	2

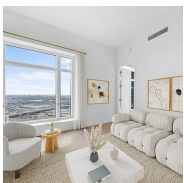


78-29 Austin Street, Unit PH2F

Forest Hills Gardens

Contract Signed

Type	Condo	Price	\$1,532,250	Sq. Ft.	1,110	Beds	2
DOM	-	Initial	\$1,532,250	PPSF	\$1,381	Baths	2



29-18 41st Avenue, Unit PHB

Astoria

Contract Signed

Type	Condo	Price	\$1,399,000	Sq. Ft.	868	Beds	2
DOM	555	Initial	\$1,401,750	PPSF	\$1,612	Baths	2

Compass is a licensed real estate broker and abides by Equal Housing Opportunity laws. All material presented herein is intended for informational purposes only. Information is compiled from sources deemed reliable but is subject to errors, omissions, changes in price, condition, sale, or withdrawal without notice. No statement is made as to the accuracy of any description. All measurements and square footages are approximate. This is not intended to solicit property already listed. Nothing herein shall be construed as legal, accounting or other professional advice outside the realm of real estate brokerage.



157-18 26th Avenue

Flushing

Contract Signed

Type	House	Price	\$1,398,888	Sq. Ft.	1,352	Beds	3
DOM	65	Initial	\$1,398,888	PPSF	\$1,035	Baths	1

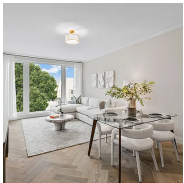


39-27 233rd Street

Douglaston

Contract Signed

Type	House	Price	\$1,388,000	Sq. Ft.	2,208	Beds	4
DOM	42	Initial	\$1,388,000	PPSF	\$629	Baths	3



78-29 Austin Street, Unit 306

Forest Hills

Contract Signed

Type	Condo	Price	\$1,386,000	Sq. Ft.	1,125	Beds	2
DOM	1	Initial	\$1,386,000	PPSF	\$1,232	Baths	2

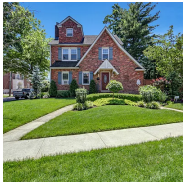


53-31 212th Street

Bayside

Contract Signed

Type	House	Price	\$1,325,000	Sq. Ft.	1,900	Beds	3
DOM	149	Initial	\$1,498,888	PPSF	\$698	Baths	2



163-18 Cryders Lane

Whitestone

Contract Signed

Type	House	Price	\$1,320,000	Sq. Ft.	-	Beds	4
DOM	52	Initial	\$1,400,000	PPSF	-	Baths	3

Compass is a licensed real estate broker and abides by Equal Housing Opportunity laws. All material presented herein is intended for informational purposes only. Information is compiled from sources deemed reliable but is subject to errors, omissions, changes in price, condition, sale, or withdrawal without notice. No statement is made as to the accuracy of any description. All measurements and square footages are approximate. This is not intended to solicit property already listed. Nothing herein shall be construed as legal, accounting or other professional advice outside the realm of real estate brokerage.